

VTL4-L GEN. 2 3 CCT, 3 POWER SELECTABLE, NEMA 4X, NSF VAPOR TIGHT SERIES

4' luminaire providing superior light distribution with the ability to withstand reduced temperatures and moderate impact. Ideal for environments where moisture and/or dust may be present. The watertight seal locks out dust and makes this fixture the perfect solution for applications that may require: washability/hose down.



■ Color and Power Selectable

CCT Selectable feature available on all configurations offering the versatility to switch between 3 color temperatures: 3 500/4 000/ 5 000 K. Convenient for a variety of projects and applications. An ideal solution for reducing stocking inventory.

■ Easy Maintenance

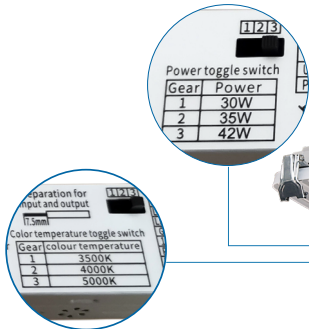
Smooth surfaces are easy to clean making this fixture perfect for NSF compliant environments. Internal components are easily accessible with the stainless steel clips. Once closed, the gasketed seal keeps the LEDs and electrical components secure from environmental debris and moisture.

■ Easy Installation

Designed for easy access and installation, the gear tray is attached to the lens exposing the internal components when the fixture is in open position.

VTL4-L GEN 2: At A Glance!

Slider button for the
Color Temperature and
Power Select feature



Lightweight, slim and high impact
resistant polycarbonate construction

Stainless Steel Clips and
Safety Straps support the Lens and
Gear Tray to the Housing during
installation and maintenance

Gear Tray attached to Lens for easy
installation and maintenance

Included with Every Luminaire!

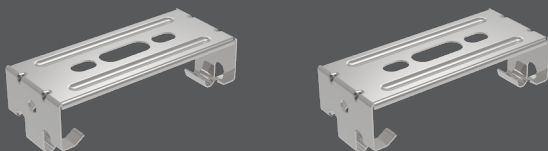
V-HOOKS

Set of 2 pcs for suspension mounting on chain or aviation cable
To be used in conjunction with the surface mount brackets



MOUNTING BRACKETS

Set of 2 pcs stainless steel surface mounting hardware for wall or ceiling



WATERTIGHT GLANDS

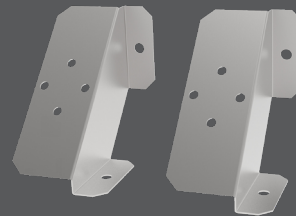
Set of 2 pcs



ACCESSORIES (SOLD SEPARATELY)

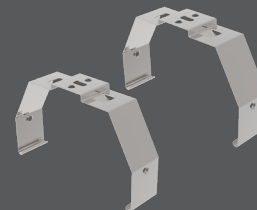
90° ANGLE BRACKETS

Set of 2 pcs in stainless steel



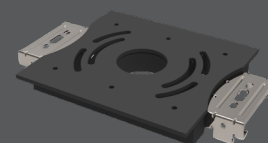
TAMPER PROOF BRACKETS

Set of 2 pcs in stainless steel



JUNCTION BOX BRACKET

Set of 1 pc



Summary Specification Table

Order code	Model number	Watts (W)	Volts (V AC)	Color temp. (K) ¹	Lumen output (lm) ^{2,3}	Efficacy (lm/W)	CRI	Life L70 (hrs) ⁴	Tested hours LM-80 (hrs) ⁴	Dimming	PF	THD (%)
4'												
69566	VTL4-PS42B-Q-3C	30/35/42	120-347	3 500/4 000/5 000	4 523/5 052/5 870	139	80+	> 54 000	190 000	0-10 V	>0.9	<20
69567	VTL4-PS65B-Q-3C	30/45/65	120-347	3 500/4 000/5 000	4 439/6 385/9 001	145	80+	> 54 000	190 000	0-10 V	>0.9	<20

¹ Typical color temperature range: +/- 5 %.
² Lumen values are derived from photometric testing. Initial lumens range: +/- 10 %.
³ Lumen values are based on 4 000 K default programming. Please refer to the LUMEN SPECIFICATION TABLE for more details on other color temperatures
⁴ Life hours are derived from IESNA LM-80-08 testing report and projected per IESNA TM-21-11 extrapolations

DLC UNIQUE ID TABLE

Order code	Model Number	DLC Premium Unique ID ¹	DLC Standard Unique ID ²	DLC Standard Unique ID ³
69566	VTL4-PS42B-Q-3C	S-48IUZM	S-QKODFL	S-CRLNQ4
69567	VTL4-PS65B-Q-3C	S-8E752G	S-B69105	S-I3WZ0T

¹ Primary Use Designation: Stairwell and Passageway Luminaires
² Primary Use Designation: Direct Linear Ambient Luminaires
³ Primary Use Designation: Low-Bay Luminaires for Commercial and Industrial Buildings

ORDERING GUIDE

VTL4	—	—	—	3C	/	
Series	Lumen package (W)	Volts (V)	Color temp. (K)	Options		
VTL4	PS42B - 30/35/42 PS65B - 30/45/65	Q - 120-347	3C - 3 500 4 000 5 000	BLANK -	No sensor	
				OS ^{1,3} -	Occupancy sensor	
				DIM1 ² -	5 wire cable for AC and 0-10 V dimming	
				EL1 ⁶ -	LINK Normal ON emergency remote	
				DL ^{3,5} -	Emergency back up (0°C - 25°C) 120 V, 120-277 V	
				KV -	10 kV surge protector	
				L6 -	6' white power cord	
				L10 -	10' white power cord	
				L6-BK -	6' black power cord	
				L10-BK -	10' black power cord	
				CH ³ -	Center hole 7/8"	
				AC ^{2,4} -	Aviation cable kit	
				PVM -	Pivot mount brackets (surface mount ceiling and wall)	
				BM -	Smart module	
				BMS -	Smart module & sensor	

¹ To see available options, please consult the occupancy sensors section
² When selecting AC or DIM1 option, please also select cable option whether L6, L10, L6-BK or L10-BK. DL option not compatible with DIM1
³ When selecting CH, OS (external) and DL options, the fixture maintains wet location status, however NEMA 4X and IP rating are not applicable
⁴ Aviation cable length based on selected power cable length
⁵ Fixture functional in AC mode, when power goes off emergency driver (DL) powers LED boards. One emergency driver per fixture is standard
⁶ The LINK Emergency Power conversion module is compatible with all the following configurations: PS42B and PS65B. Not compatible with the following options: DL, OS (external)
When in Emergency Mode, unit only consumes 11 watts