

VTE4-L GEN. 2 3 CCT SELECTABLE LED VAPOR TIGHT SERIES

A luminaire ideal for a variety of industrial, commercial applications. Installed either indoors or outside, the VTE4-L provides superior light distribution. Intended for applications where moisture and/or dust may be present.



■ Color Selectable

CCT Selectable feature available on all configurations offering the versatility to switch between 3 color temperatures: 3 500/4 000/5 000 K. Convenient for a variety of projects and applications. An ideal solution for reducing stocking inventory.

■ Multi-Voltage

Say goodbye to stocking both 120-277 V and 347 V configurations and never worry about sending the wrong voltage to a job site - our drivers function automatically between 120-277 V and 347 V.

■ Frosted LED diffusing pigment lens

The frosted LED diffusing pigment lens provide uniform light distribution and has been UV stabilized to ensure no yellowing over time.

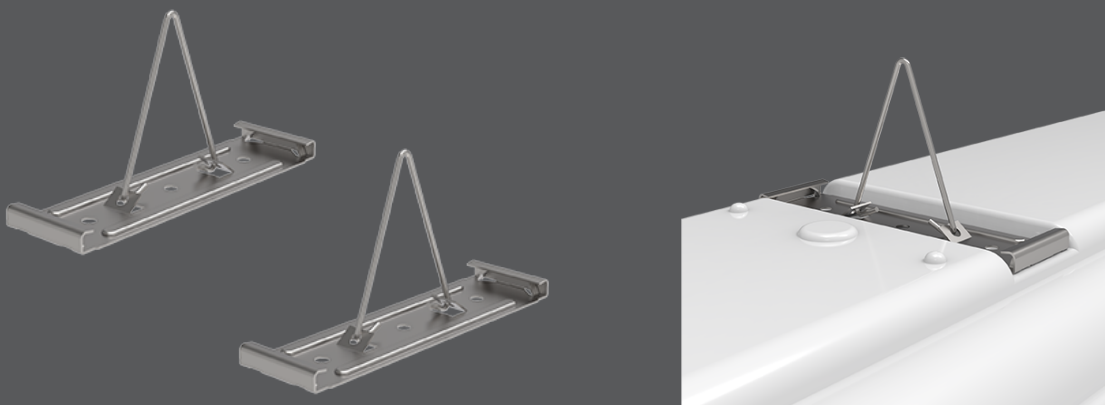
VTE4-L GEN. 2: At A Glance!



Included with Every Luminaire!

MOUNTING BRACKETS WITH V-HOOKS

Set of 2 pcs in stainless steel for suspension mounting on chain or aviation cable. For wall or ceiling mounting.



Summary Specification Table

Order code	Model Number	Watts (W)	Volts (VAC)	Color temp. (K) ¹	Lumen output (lm) ²	Efficacy (lm/W)	CRI	Life L70 (hrs) ^{3,4}	Tested hours LM-80 (hrs) ^{3,4}	Dimming (Yes/No)	Power factor	THD (%)
69594	VTE4-LS3B-Q-3C	40	120-347	3 CCT (3 500/4 000/5 000)	5 688	143	80+	135 000	9 000	0-10	>0.90	<20
69595	VTE4-LS4B-Q-3C	60	120-347	3 CCT (3 500/4 000/5 000)	8 441	141	80+	135 000	9 000	0-10	>0.90	<20

¹ Typical color temperature range: +/- 5 %.

² Lumen values are derived from photometric testing. Initial lumens range: +/- 10 %.

³ Lumen values are derived from 4 000 K. Please refer to the LUMEN SPECIFICATION TABLE for more details on other color temperatures.

⁴ Life hours are derived from IESNA LM-08 testing report and projected per IESNA TM-11 extrapolations.

DLC UNIQUE ID TABLE

Order Code	Model Number	DLC Premium Unique ID ¹	DLC Standard Unique ID ²
69594	VTE4-LS3B-Q-3C	S-78SMBD	S-PF31XW
69595	VTE4-LS4B-Q-3C	S-XFTL18	S-RJ5MKU

¹ Primary Use Designation: Low-Bay Luminaires for Commercial and Industrial Buildings

² Primary Use Designation: Direct Linear Ambient Luminaire

LUMEN SPECIFICATION TABLE

Order code	Model Number	Watts (W)	Volts (V)	3 500 K		4 000 K		5 000 K	
				Lumen output (lm)	Efficacy (lm/W)	Lumen output (lm)	Efficacy (lm/W)	Lumen output (lm)	Efficacy (lm/W)
69594	VTE4-LS3B-Q-3C	40	120-347	5 379	133	5 688	143	5 578	139
69595	VTE4-LS4B-Q-3C	60	120-347	8 069	133	8 441	141	8 281	137

ACCESSORIES (ORDER SEPARATELY)

Order code	Type	Compatible with
68834 ¹	Replacement stainless steel latch (1pc)	All configurations
CAS060-KITS-JP ²	Replacement mounting hardware kit	All configurations
CAS060-LENS-BR-FR	4" replacement frosted polycarbonate lens (1pc)	All configurations
CAS060-MC-JP ¹	Replacement polycarbonate latch (1pc)	All configurations

¹ 10 latches are required per fixture

² Mounting hardware replacement kit includes: V-hooks (2), stainless steel surface mount brackets for ceiling mount (2), PC latches (2), watertight end cap (1), nickel plated M4 screws 1.5 x 2.5mm (4), nickel plated M4 washers (4), drywall plugs (4), wire nuts (3)

COMPATIBLE DIMMERS¹

Brand	Model number
LUTRON	DVSTV-HX DIVA 8 AMP 3-WAY/SINGLE -POLE 0-10V DIMMER
EATON	Controls DF10P-CI DECORATOR 0-10V DIMMER
COOPER	SF10P-W
LUXDRIVE	DIMMING CONTROL - 0-10V LOW VOLTAGE WALL MOUNT CONTROL
LUTRON	DVTV-WH DIVA 30mA SINGLE POLE 0-10V FLUORESCENT DIMMER
LEVITON	DS710-10Z

Dimming range: 10%-100%

¹ This table shows dimmers that have been tested and have demonstrated proper operation under normal conditions. Each installation being unique, various factors such as load, common neutrals or other electrical products on the circuit can, in certain instances, cause variance in system performance. Read and comply to the dimmer installation instructions. Consult dimming system manufacturer for additional support in operation. Some dimmers may require more than one product for stable operation. Stanpro recommends to use dimmers designed to work with LED products. Older dimmers designed for incandescent products may cause erratic operation.