

L2WMG CHOICE LED Wraparound

Stanpro's L2WMG series features a slim profile with modern design. It is ideal for surface and row mounting, suitable for a variety of commercial and residential applications, such as utility rooms, corridors, hallways, restrooms and anywhere a decorative luminaire with efficient lighting is required.



■ 5 CCT and 3 Power Selectable

Available in 2' and 4', with the choice of single colour temperature of 4 000 K or 5 colour temperature (3 000/3 500/4 000/4 500/5 000 K) and 3 power selectable.

■ Linkable or Hardwire

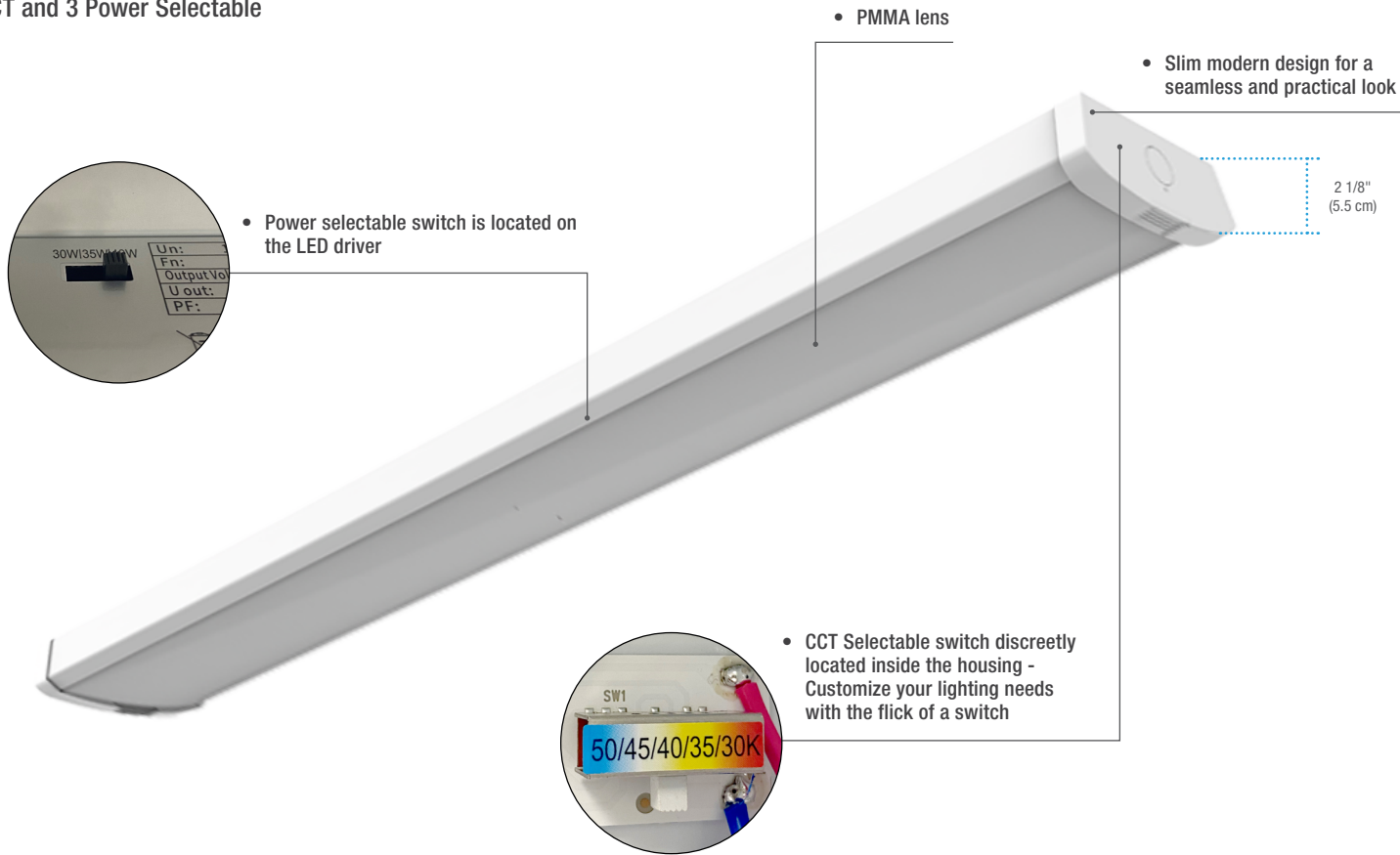
The linkable version features 3-pin receptacles on each end and comes standard with connector accessories to allow for easy and rapid connection between multiple luminaires, without additional wiring. The hardwire version has knockouts on both ends and allows for row dimming.

■ Modern Design

Slim design with rounded edges for a more aesthetically pleasing result.

L2WMG CHOICE

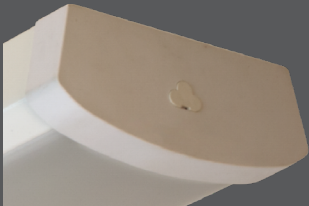
5 CCT and 3 Power Selectable



* Above picture is for hardwire version only. For information on other versions, see our product spec sheet for details.

End Cap Views and Connectors

Multiple options for connection



End cap view for linkable versions



End cap view for hardwire versions



Connectors