

## FLB LED Flood Light GEN 4

This versatile family of highly efficient and powerful LED flood lights features a modern design, wide range of lumen packages, selectable power switches and selectable color temperature options. Typical applications include general lighting of grounds, storage yards, car dealerships, parking areas as well as flood lighting of signs and building facades.



dimmmable  
fixture



quick  
ship



### ■ Color and Power Selectable<sup>1</sup>

An all-in-one LED Flood light solution offering ultimate versatility, with the ability to change the color temperature (3 000/4 000/5 000 K) and lumen output for a variety of projects and applications. It is an ideal cost-effective solution to reduce stocking inventory.

### ■ Optics

This series features NEMA type 7Hx6V or 7Hx7V flood optics to best suit your lighting layout needs.

### ■ Universal mountings

With a variety of universal mounting options to choose from, wall, ground and pole mounting has never been made so easy!

<sup>1</sup> Available on some configurations. Consult spec sheet for more details.

## Flood-in-one solution

- Aluminum heat sink

- Clear polycarbonate Lens

- CCT Selectable Switch  
3 000/4 000/5 000 K

- Power Selectable Switch  
50/80/100/150 W

## Technical Specifications



**100 W**  
13 127 - 13 889 lm



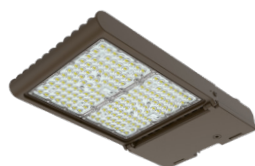
**150 W**  
20 649 - 21 518 lm



**230 W**  
31 954 - 34 040 lm



**300 W**  
40 569 - 42 098 lm



**400 W**  
57 654 - 58 148 lm

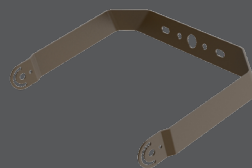


**50/80/100/150 W**  
6 800 - 19 200 lm

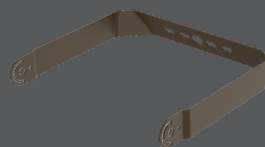
## Universal mountings

Field interchangeable mountings that allow for easy and quick installation.

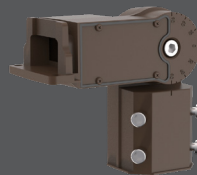
**68569**  
Yoke for FLBS-FLBM



**68570**  
Yoke for FLBL-FLBX



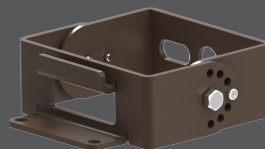
**68571**  
Slipfitter



**68572**  
Square/round  
Pole arm



**68573**  
Trunnion



**68717**  
Slipfitter and Wall  
mount adapter

