

FLM LED Mini Flood Light

The FLM series is a family of highly efficient and affordable compact flood lights featuring the latest in LED technology by allowing the user to control the color temperature and power via field adjustable integrated switches. Typical applications include both commercial and residential environment: backyards, walkways as well as flood lighting of signs and building fronts.



■ CCT and Power Selectable

An all-in-one LED Flood light solution offering ultimate versatility, with the ability to change the color temperature (3 000/4000/5000 K) and lumen output for a variety of projects and applications. It is an ideal cost-effective solution to reduce stocking inventory.

■ Photocell included

An on-off photocell is integrated on the 35/60 W models which can be easily disabled.

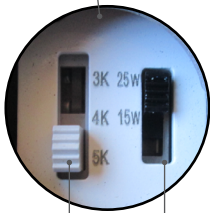
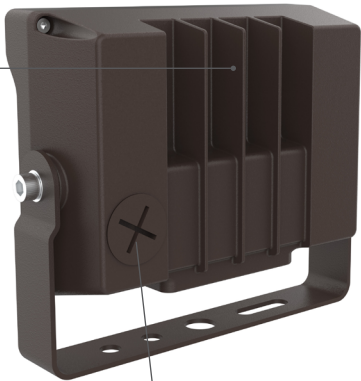
■ Mountings

The fixture comes with either a knuckle or a yoke mounting

Physical Characteristics

- Clear tempered glass Lens

- Aluminum heat sink



- Power select
15/25W
35/60W

- CCT select 3 000/4 000/ 5 000K

Standard Mounting Offering

Knuckle Mount



Yoke Mount



Specification Table

Order code	Model number	DLC unique ID	Watts (W)	Volts (VAC)	Color temp. (K) ¹	Lumen output (lm) ^{2,3}	Efficacy (lm/W)	CRI	Life L70 (hrs) ⁴	Tested hours LM-80 (hrs) ⁴	Calc. TM21 (hrs) ⁴	NEMA type	BUG	EPA (ft²)	LED current (mA)	Finish	Photocell (Yes/No)	Power factor	THD (%)	Traditional equivalent (W)	Master case qty
																				MH	HPS

CCT and Power Selectable with Integrated Photocell⁵

69179	FLM-PS25A-W-3C-BR-YK	S-6H5L0K	15/25	120-277	3 000/4 000/5 000	2 244/3 736	120-140	80+	50 000	9000	140 000	7Hx6V	B3 U0 G1	0.18	0.23	Bronze	NO	≥0.90	≤20	70-100	100-150	10
69180	FLM-PS25A-W-3C-BR-KN	S-6H5L0K	15/25	120-277	3 000/4 000/5 000	2 244/3 736	120-140	80+	50 000	9000	140 000	7Hx6V	B3 U0 G1	0.18	0.23	Bronze	NO	≥0.90	≤20	70-100	100-150	10
69181	FLM-PS60A-W-3C-BR-YK-P ⁵	S-OYI5H3	35/60	120-277	3 000/4 000/5 000	5 618/8 693	125-140	80+	50 000	9000	140 000	7Hx6V	B3 U0 G1	0.42	0.6	Bronze	YES	≥0.90	≤20	175-400	150-250	10
69182	FLM-PS60A-W-3C-BR-KN-P ⁵	S-OYI5H3	35/60	120-277	3 000/4 000/5 000	5 618/8 693	125-140	80+	50 000	9000	140 000	7Hx6V	B3 U0 G1	0.42	0.6	Bronze	YES	≥0.90	≤20	175-400	150-250	10

¹ Typical color temperature range: +/- 5 %.

² Lumen values are derived from photometric testing. Initial lumens range: +/- 10 %.

³ Lumen values are based on 4 000 K default programming. Please refer to the LUMEN SPECIFICATION TABLE for more details on other color temperatures.

⁴ Life hours are derived from IESNA LM-80-08 testing report and projected per IESNA TM-21-11 extrapolations.

⁵ Integrated ON/OFF photocell that can be easily disabled.