

## OLYMPUS LED Sports Light

The Olympus LED sports light is an efficient luminaire which performs well under any condition due to its high quality heat sink and its anti-corrosion finish. This luminaire was built with a gasket designed to protect the electrical components against liquid and solid ingress. The Olympus is a great solution for any recreational outdoor sports field.



power  
selectable



dimnable



600W

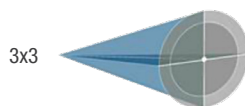


1 000W

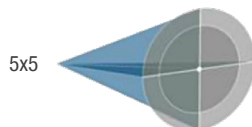
### ■ Power Selectable

The Olympus is a high-performance luminaire offering ultimate versatility, with the ability to modify light output to suit any project and application.

### ■ Optics



Designed with a narrow pattern for a precision lighting around the perimeter of the sports field.



Designed with a wide and uniform pattern to ensure the center of the sports field is properly lit.

### ■ Accessories

The Olympus series has all the accessories needed to complete any project including a visor, a laser pointer and a slipfitter.



OLYMPUS LED Sports Light

Optimal performance with die-cast heat sinks

High efficacy LEDs

NEMA 4X certified, suitable for environments with higher salt concentration



7 pin photocell receptacle with shorting cap for the ability to add a dusk till dawn photocell for additional energy savings



Precise installation thanks to the angle indicators located on the yoke and the side of on the sports light

3G vibration rated

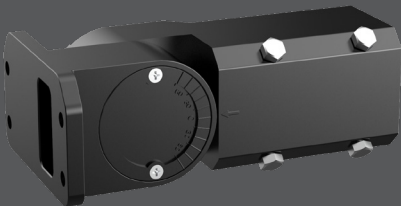
20kV surge protection

Frosted polycarbonate lenses to minimize glare

Accessories



Laser Pointer



Slipfitter



Glare shield

# Summary Specification Table

Order code	Model number	Watts	Volts	Color temp.	Lumen output	Efficacy	CRI	Life L70	Tested hours LM-80	NEMA type	BUG	EPA	LED current	Finish	Photocell	Traditional equivalent	Master case qty
		(W)	(VAC)	(K) <sup>1</sup>	(lm) <sup>2</sup>	(lm/W)		(hrs) <sup>3</sup>	(hrs) <sup>3</sup>			(ft <sup>2</sup> ) <sup>4</sup>	(mA)		(Yes/No)	(W)	
																MH	HPS
69765	OLPPS6003Q40KBKYK	400/500/600	120-347	4 000	57 559/68 674/85 178	140	70+	150 000	10 000	3x3	B5-U0-G1	1.6	126-190	Black	No	1 000 1 000	1
69771	OLPPS10003440KBKYK	600/800/1 000	200-480	4 000	91 893/119 450/144 977	143	70+	150 000	10 000	3x3	B5-U0-G2	3.3	146-155	Black	No	1 000 1 000	1
69773	OLPPS6005Q40KBKYK	400/500/600	120-347	4 000	63 067/74 631/88 554	146	70+	150 000	10 000	5x5	B5-U0-G1	1.6	126-190	Black	No	1 000 1 000	1
69774	OLPPS10005440KBKYK	600/800/1 000	200-480	4 000	88 154/114 520/147 425	145	70+	150 000	10 000	5x5	B5-U0-G2	3.3	140-149	Black	No	1 000 1 000	1

<sup>1</sup> Typical color temperature range: +/- 5 %.

<sup>2</sup> Lumen values are derived from photometric testing. Initial lumens range: +/- 10 %.

<sup>3</sup> Life hours are derived from IESNA LM-80 testing report and projected per IESNA TM-21 extrapolations.

<sup>4</sup> Sports light positioned at a 0° tilt.

## ACCESSORIES (order separately)

Order code	Type
69766	Glare shield for 600W
69770	Glare shield for 1 000W
69768	Laser Pointer <sup>2</sup>
69767	Slipfitter 600W-1 000W <sup>1</sup>

<sup>1</sup> EPA value: 2.17ft² for 600W models and 3.85ft² for 1 000W models with a 0° tilt

<sup>2</sup> Laser pointer includes one rechargeable battery and battery recharger