

## L2SNQ LED Slim Strip with Square Lens

The L2SNQ series showcases a slim profile, allowing for installation in tight and restrictive spaces. Benefit from high-performance light output without sacrificing smooth and uniform lighting. With its sleek and modern square lens design, the L2SNQ series is the ideal choice for commercial, industrial, and retail applications.



### ■ Color and Power Selectable

Versatile LED strip luminaires with the ability to adapt to the colour temperature (3 500/4 000/ 5 000 K) and lumen output requirements for a variety of projects and applications. A single SKU can now replace up to 18 individual luminaires - a distributor's best friend!

### ■ Easy Installation

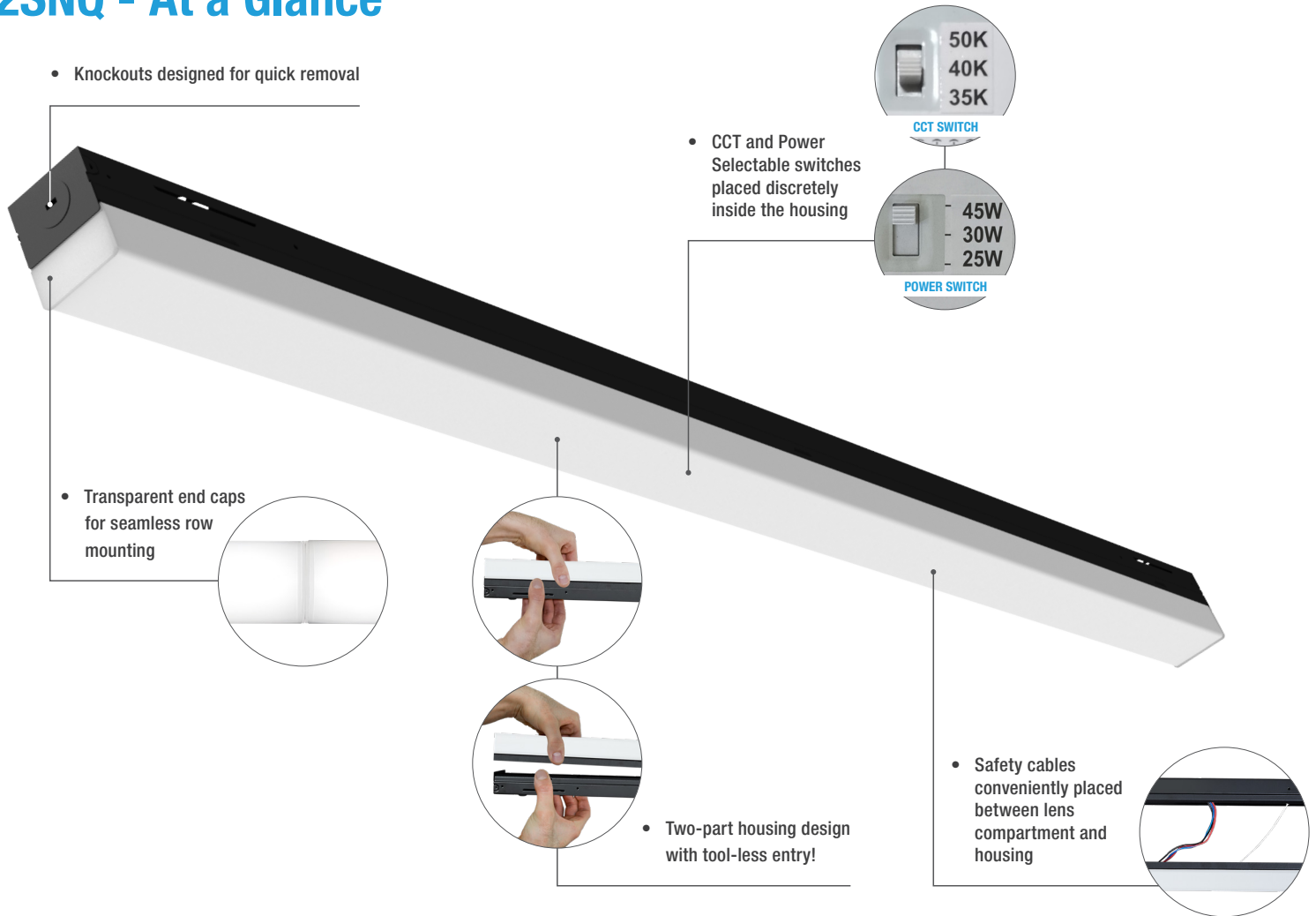
Quick and easy to install thanks to the innovative and lightweight design. Included in every box is a junction box cover for a polished result every time.

### ■ Square Lens Design

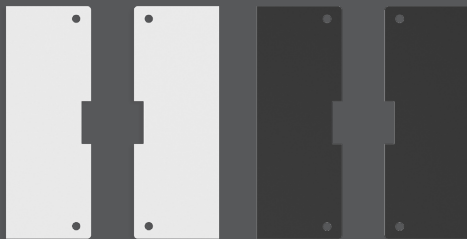
Whether surface, suspended or row mounted, the L2SNQ provides a modern aesthetic with its straight edge profile. The sleek form factor makes it an appealing choice that can be used across multiple applications.



## L2SNQ - At a Glance



### Included with Every Luminaire!

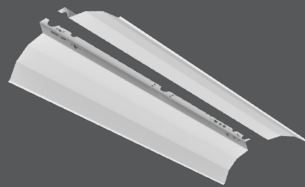


Square Shaped  
Junction Box Covers



Create a streamlined and modern look when surface mounting the L2SNQ series!

### Accessories (Sold Separately)



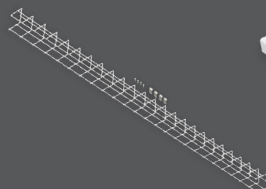
Reflector Wings Kit 48"



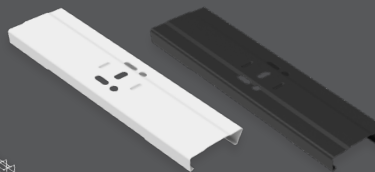
V-Hooks



Suspension Chain Kit



Wire Guard Kits



Continuous Row Mounting  
Connectors



10' Complete Aircraft Cable Kits  
with 5-Wire Power Feed and 2  
Canopies