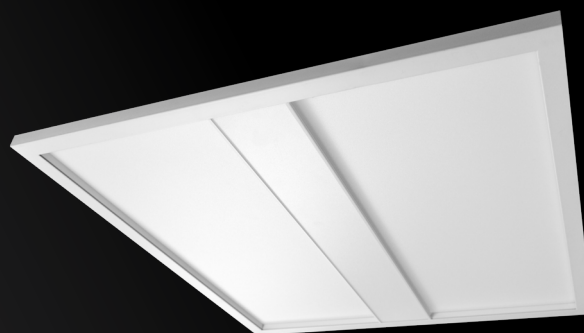




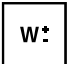









# HORIZON

## LED ARCHITECTURAL RECESSED LUMINAIRE

### 3 CCT AND 3 POWER SELECTABLE

With its slightly regressed lens detail and its clean straight lines, Aimlite's HORIZON recessed luminaire offers a perfect alternative to standard panel luminaires. This architecturally looking luminaire delivers a uniform and soft illumination to light up any space. Featuring a 120-347V LED driver with the ability to change lumen output and color temperature, it is ideal for bringing a modern touch to new construction or for retrofitting many commercial and institutional spaces such as offices, schools, retail stores, etc.



OVERVIEW			
LIGHT SOURCE	LED	EFFICACY (LM/W)	110 - 125
WATTS [W]	25/30/35 30/40/50	COLOR TEMPERATURE [K]	3 500/4 000/5 000
LUMEN OUTPUT [LM]	2 818 - 6 487	CRI	83
<div>   3CCT SELECTABLE            POWER SELECTABLE            QUICKSHIP            LED            DIMMABLE            DAMP LOCATION         </div> <div>  IC RATED            ICES 005              </div>			

Not all products are qualified on the DLC QPL. To view our DLC qualified products, please consult the DLC Qualified Products List at [www.designlights.org/search](http://www.designlights.org/search).

Data is based upon tests performed in a controlled environment. Actual performance can vary depending on operating conditions.  
 All products are subject to change or may be discontinued any time without notice.



## FEATURES & SPECIFICATIONS

### CONSTRUCTION

#### Housing and finishing

- Low profile design with aluminum construction
- PMMA LED lens
- Polystyrene diffuser
- CCT and Power Select switches are placed on the driver box

### INSTALLATION

- Recessed inverted T-Bar ceilings
- Grid mount
- Drywall mount kit available as accessory and sold separately

### ELECTRICAL

- Available in 3 500/4 000/5 000 K
- 83 CRI
- Electrical rating: 120-347 V
- Estimated life of over 176 000 hours to L70
- 0-10 V dimming standard
- 2 kV surge protection
- Operating temperature:
  - -20 °C to 40 °C [-4 °F to 104 °F]

### COMPLIANCES

- cULus listed for damp locations
- DLC Standard for 1'X4',
- DLC Premium for 2'X2' and 2'X4'
- Meets requirements of ICES-005 issue 5 class B for use in residential applications
- IC rated for direct contact with insulation

#### Conforms to:

- CAN/ULC-S102.3-07 Standard Method of fire test of light diffusers and lenses
- CAN/ULC-S102.2-10 Standard method of test for surface burning characteristics of flooring, floor coverings, and miscellaneous materials and assemblies

## QUICK SHIP ORDERING GUIDE



PART NO	DLC UNIQUE ID	WATTS [W]	VOLTS [VAC]	COLOR TEMP. [K] <sup>1</sup>	LUMEN OUTPUT [LM] <sup>2,3</sup>	EFFI- CACY [LM/W]	CRI	LIFE L70 [HRS] <sup>4</sup>	TESTED HOURS LM-80 [HRS] <sup>4</sup>	DIM- MING	PF	THD [%]	MASTER CASE QTY <sup>5</sup>
<b>DLC STANDARD 1'X4'</b>													
<b>P14AR-1LPS35-32/3C</b>	S-U04Q9G	25/30/35	120-347	3 500/4 000/5 000	2 750/3 300/3 850	110	83	176 000	10 000	Yes	>0.9	<20	2
<b>DLC PREMIUM 2'X2'</b>													
<b>P14AR-2LP35P-32/3C</b>	S-6H3EF2	25/30/35	120-347	3 500/4 000/5 000	3 125/3 750/4 375	125	83	176 000	10 000	Yes	>0.9	<20	2
<b>2'X4'</b>													
<b>P14AR-4LP50P-32/3C</b>	S-MU3LKH	30/40/50	120-347	3 500/4 000/5 000	3 750/5 000/6 250	125	83	176 000	10 000	Yes	>0.9	<20	2

QUICK SHIP: Product availability is subject to change without notice. Please contact your AimLite customer service representative to confirm inventory levels at time of order.

<sup>1</sup> Typical color temperature range: +/- 5 %.

<sup>2</sup> Lumen values are derived from photometric testing. Initial lumens range: +/- 10 %.

<sup>3</sup> Lumen values are derived from DLC reported data at 3 500 K. Please refer to the LUMEN SPECIFICATION TABLE for more details on other color temperatures.

<sup>4</sup> Life hours are derived from IESNA LM-80-08 testing report and projected per IESNA TM-21-11 extrapolations.

<sup>5</sup> Standard packaging is 2 panels per master case without individual box.

## LUMEN SPECIFICATION TABLE

PART NUMBER	WATTS [W]	3 500 K		4 000 K		5 000 K	
		LUMEN OUTPUT [LM]	EFFICACY [LM/W]	LUMEN OUTPUT [LM]	EFFICACY [LM/W]	LUMEN OUTPUT [LM]	EFFICACY [LM/W]
<b>P14AR-1LPS35-32/3C</b>	25	2 818	113	2 902	116	2 855	114
	30	3 361	112	3 480	116	3 401	113
	35	3 861	110	4 006	114	3 887	111
<b>P14AR-2LP35P-32/3C</b>	25	3 141	126	3 224	129	3 164	127
	30	3 745	125	3 865	129	3 806	127
	35	4 298	123	4 449	127	4 311	123
<b>P14AR-4LP50P-32/3C</b>	30	3 754	125	3 864	129	3 840	128
	40	5 000	125	5 193	130	5 084	127
	50	6 219	124	6 487	130	6 288	126

### DEFAULT PROGRAMMING

P14AR-1LPS35-32/3C : 35 W / 4000 K

P14AR-2LP35P-32/3C : 35 W / 4000 K

P14AR-4LP50P-32/3C : 50 W / 4000 K

## ACCESSORIES (ORDER SEPARATELY)

ORDER CODE	TYPE	COMPATIBLE WITH
PF-DWK-1X4-A	DRYWALL KIT	1'X4'
PF-DWK-2X2-A	DRYWALL KIT	2'X2'
PF-DWK-2X4-A	DRYWALL KIT	2'X4'

## COMPATIBLE DIMMERS<sup>1</sup>

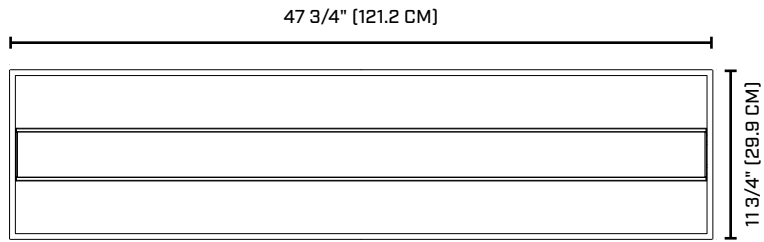
BRAND	MODEL NUMBER
LEVITON	DD710, IP710
LUTRON	MS-Z101, NTSTV-DV, DVSTV
LEGRAND	RH4FBL3PTC

**Dimming range:** 10%-100%

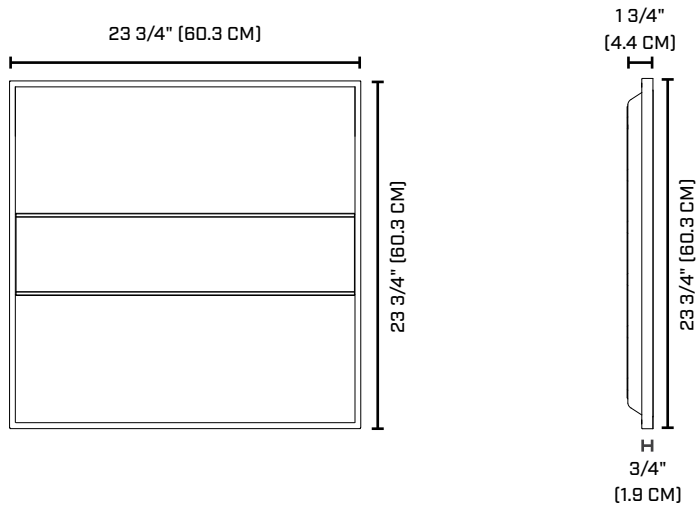
<sup>1</sup> This table shows dimmers that have been tested and have demonstrated proper operation under normal conditions. Each installation being unique, various factors such as load, common neutrals or other electrical products on the circuit can, in certain instances, cause variance in system performance. Read and comply to the dimmer installation instructions. Consult dimming system manufacturer for additional support in operation. Some dimmers may require more than one product for stable operation. Aimlite recommends to use dimmers designed to work with LED products. Older dimmers designed for incandescent products may cause erratic operation.

## DIMENSIONS AND WEIGHTS

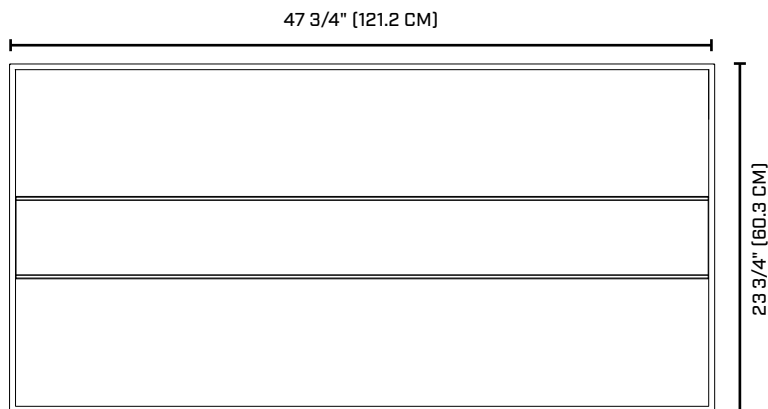
### 1'X4'



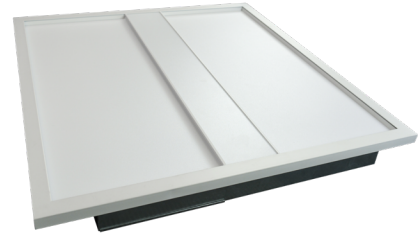
### 2'X2'



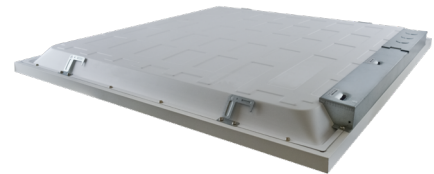
### 2'X4'



FRONT VIEW:



BACK VIEW:

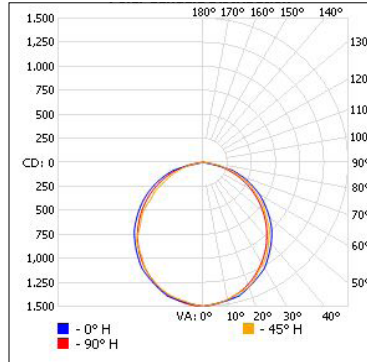


	1X4	2X2	2X4
NET WEIGHT [LBS]	12.13	10.14	16.09

## PHOTOMETRIC DATA<sup>1</sup>

P14AR-1LP35-32/3C • 35 W • 4 000 K • 4 006.4 LM

### POLAR CANDELA DISTRIBUTION



### ZONAL LUMEN SUMMARY

ZONE	LUMENS	% FIXTURE
0-30	1 141.5	28.5
0-40	1 861.3	46.5
0-60	3 248.2	81.1
60-90	758.1	18.9
0-90	4 006.4	100

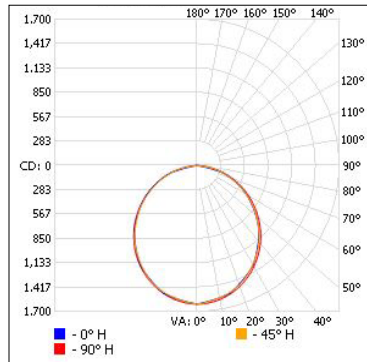
### ILLUMINANCE AT A DISTANCE

CENTER BEAM FC		BEAM WIDTH	
2.0'	374.4	6.1'	5.4'
4.0'	93.6	12.2'	10.8'
6.0'	41.6	18.3'	16.3'
8.0'	23.4	24.3'	21.7'
10.0'	15.0	30.4'	27.1'

■ Vert. Spread: 113.4° ■ Hor. Spread: 107.1°

P14AR-2LP35P-32/3C • 35 W • 4 000 K • 4 448.7 LM

### POLAR CANDELA DISTRIBUTION



### ZONAL LUMEN SUMMARY

ZONE	LUMENS	% FIXTURE
0-30	1 236.0	27.8
0-40	2 019.6	45.4
0-60	3 556.7	80
60-90	891.9	20
0-90	4 448.7	100

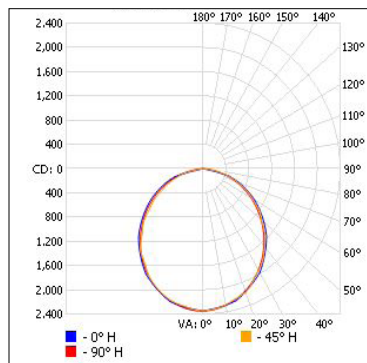
### ILLUMINANCE AT A DISTANCE

CENTER BEAM FC		BEAM WIDTH	
2.0'	403.7	5.7'	6.0'
4.0'	100.9	11.5'	11.9'
6.0'	44.9	17.2'	17.9'
8.0'	25.2	23.0'	23.9'
10.0'	16.1	28.7'	29.8'

■ Vert. Spread: 110.3° ■ Hor. Spread: 112.3°

P14AR-4LP50P-32/3C • 50 W • 4 000 K • 6 487.2 LM

### POLAR CANDELA DISTRIBUTION



### ZONAL LUMEN SUMMARY

ZONE	LUMENS	% FIXTURE
0-30	1 804.3	27.8
0-40	2 951.2	45.5
0-60	5 198.0	80.1
60-90	1 289.2	19.9
0-90	6 487.2	100

### ILLUMINANCE AT A DISTANCE

CENTER BEAM FC		BEAM WIDTH	
2.0'	587.2	6.1'	5.7'
4.0'	146.8	12.2'	11.5'
6.0'	65.2	18.3'	17.2'
8.0'	36.7	24.4'	23.0'
10.0'	23.5	30.5'	28.7'

■ Vert. Spread: 113.5° ■ Hor. Spread: 110.3°

<sup>1</sup> Complete IES files available on our website.