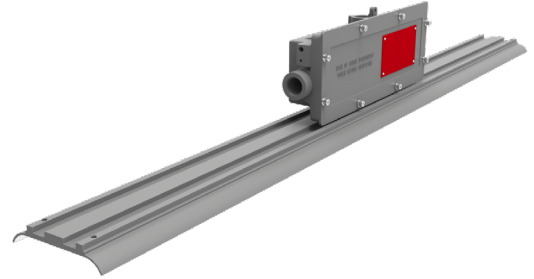


C4L-L

HAZARDOUS LOCATION LED LINEAR LUMINAIRE

CLASS I, DIVISION 2, GROUPS A, B, C, D
 CLASS II, DIVISION 1, GROUPS E, F, G
 CLASS III
 NON RECESSED MARINE LUMINAIRES,
 OUTSIDE TYPE [SALT WATER]



The C4L-L Hazardous Location LED linear luminaire is designed for installations where moisture, dirt, dust, corrosion and vibration may be present. The C4L-L is also NEC/CEC certified to be used in hazardous environments where there is presence of flammable vapors or gases.

FEATURES AND SPECIFICATIONS

CONSTRUCTION

Housing

Rugged and resilient housing made of a copper-free aluminum, corrosion resistant casting, with separated driver compartment for improved thermal management. All exposed fasteners are quality stainless steel as well as high temperature quality silicone gasketing. Available in a grey casting color and a superior electrostatic powder coating.

Temperature ratings

Based on the surface temperature of the fixture;

- Class I, Division 2 is rated T3C (will not exceed 160°C)
- Class II, Division 1 & Class III are rated T4A (will not exceed 120°C)

Ambient operating temperature

-40°C to +50°C

Ambient operating humidity

5% ~ 95% RH

Optics

Comes standard with a thermal shock and impact resistant polycarbonate lens and is available in a clear finish with a 110° beam angle.

ELECTRICAL

Available in either A1 [40 W] or A2 [80 W] configurations with a lumen per watt ratio of 132 to 150 lm/W. Driver input voltage is 347-480 V 50/60 Hz. All drivers are non-dimmable and have 4 kV integrated transient surge protection with a power factor > 0.95.

Durable high LUXEON LEDs with solder-less board connections for shock and vibration resistance. The C4L-L is offered in either 4 000 and 5 000 K, with a color rendering index [CRI] >70.

NEC/CEC STANDARDS

NEC500/CEC Section 18:

Existing plants

Hazloc C

- Class I, Division 2, Groups A, B, C, D
- Class II, Division 1, Groups E, F, G
- Class III

NEC505/CEC Section 18 Zones:

New plants

Hazloc C

- Class I, Zone 2, Group IIC
- Zone 21

COMPLIANCES

- Meets requirements of ICES-005 issue 4 for class A products
- 5G vibration resistant in compliance with IEC60598-1 standard, CL-4.20
- IP66
- IK08
- UL1598A
- UL1598
- UL8750
- CSA C22.2 No.137
- CSA C22.2 No.250, No.250.13

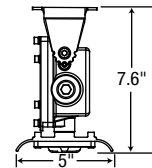
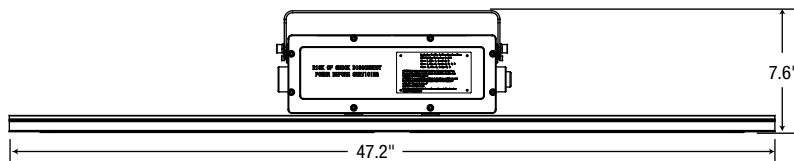
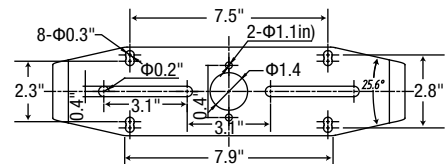
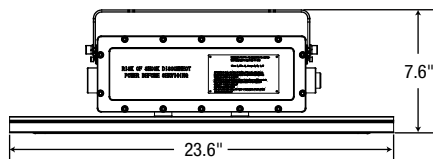
OVERVIEW			
LIGHT SOURCE	LED	COLOR TEMPERATURE [K]	4 000, 5 000
WATTS [W]	40 - 80	CRI	>70
LUMEN OUTPUT [LM]	5 984 - 11 761	WEIGHT [LBS]	12.1 - 16.7
EFFICACY [LM/W]	132 - 150		
<div> </div>			

Not all products are qualified on the DLC QPL. To view our DLC qualified products, please consult the DLC Qualified Products List at www.designlights.org/search.

C4L-L

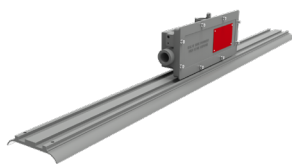
DIMENSIONS

PART #	NET WEIGHT [LBS]	DIMENSIONS [LXWXH]
C4L-LA1	12.1	23.6 X 5 X 7.6"
C4L-LA2	16.7	47.2 X 5 X 7.6"



MOUNTING

PENDANT (STANDARD)



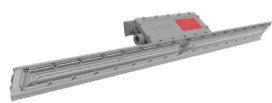
ACCESSORIES REQUIRED FOR OPTIONAL MOUNTING

CEILING MOUNT



BKT761-LN

WALL MOUNT



BKT761-LN

C4L-L

QUICK SHIP ORDERING GUIDE



PART NUMBER	WATTS [W]	COLOR TEMP. [K]	LUMEN OUTPUT [LM]	EFFI- CACY [LM/W]	CRI	LIFE L70 [HRS]	LM80	LED CURRENT [MA]	PF	THD [%]	B.U.G. RATING	BEAM ANGLE [°]	CASE QTY [MASTER]
347-480 V													
C4L-LA1-8-C/40K-T	40	4 000	5 984	150	70	54 000	9 000	84	0.89	16	B4-U0-G1	110	1
C4L-LA2-8-C/40K-T	80	4 000	11 761	147	70	54 000	9 000	84	0.89	9	B4-U0-G1	110	1
C4L-LA1-8-C/50K-T	40	5 000	5 480	132	70	54 000	9 000	84	0.89	16	B4-U0-G1	110	1
C4L-LA2-8-C/50K-T	80	5 000	10 960	137	70	54 000	9 000	84	0.89	9	B4-U0-G1	110	1

QUICK SHIP: Product availability is subject to change without notice. Please contact your AimLite customer service representative to confirm inventory levels at time of order.

ACCESSORIES [ORDER SEPARATELY]

PART #	DESCRIPTION
BKT761-LN	U-BRACKET

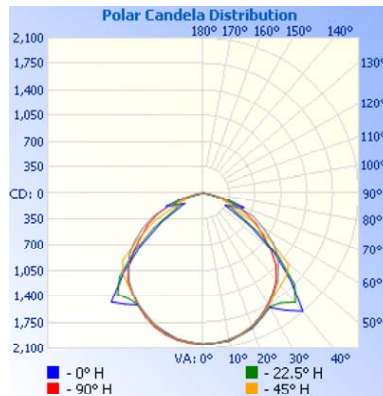


BKT761-LN
U-bracket

PHOTOMETRIC DATA

C4L-LA1-2-C/40K-T • 6 041 LM

POLAR CANDELA DISTRIBUTION



ZONAL LUMEN SUMMARY

ZONE	LUMENS	% FIXTURE
0-30	1 598.1	28.5
0-40	2 682.6	47.9
0-60	4 750.2	84.7
60-90	855.7	15.3
0-90	5 605.9	100

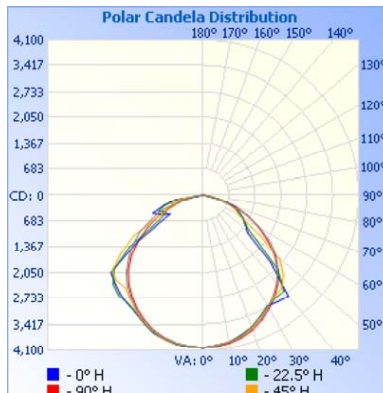
ILLUMINANCE AT A DISTANCE

CENTER BEAM FC		BEAM WIDTH	
1.7'	707	4.3'	3.4'
3.3'	188	8.3'	6.6'
5.0'	81.7	12.6'	10.0'
6.7'	45.5	16.9'	13.5'
8.3'	29.6	20.9'	16.7'
10'	20.4	25.2'	20.1'

■ Vert. Spread: 103° ■ Hor. Spread: 90.3°

C4L-LA2-2-C/40K-T • 12 231 LM

POLAR CANDELA DISTRIBUTION



ZONAL LUMEN SUMMARY

ZONE	LUMENS	% FIXTURE
0-30	3 160.4	27.8
0-40	5 263.3	46.4
0-60	9 356.8	82.4
60-90	1 995.3	17.6
0-90	11 352.10	100

ILLUMINANCE AT A DISTANCE

CENTER BEAM FC		BEAM WIDTH	
1.7'	1 396	4.3'	5.0'
3.3'	370	8.3'	9.7'
5.0'	161	12.5'	14.7'
6.7'	89.9	16.8'	19.7'
8.3'	58.6	20.8'	24.5'
10'	40.3	25.1'	29.5'

■ Vert. Spread: 102.9° ■ Hor. Spread: 111.7°

All products are subject to change or may be discontinued any time without notice.
Please consult our chemical resistance guide to ensure selection of the proper product for your application.