

Series Spec Sheet

SWNX

HAZARDOUS LOCATION REMOTE

Class I, div 2, groups A, B, C, D

Class II, div 2, groups F, G

Class III, div 2

The SWNX series of wet location anti vandal remotes is designed to perform in extreme environments. The single or double lamp assemblies are completely protected from the elements within a fully gasketed polycarbonate housing. Available in 6 V, 12 V or 24 V models, LED (bi-pin based) lamps.

FEATURES AND SPECIFICATIONS

• Electrical and circuitry

- 6 VDC, 12 VDC or 24 VDC
- LED lamps - bi-pin based

• Mechanical

- Polycarbonate enclosure is fully gasketed around lens and canopy to prevent water infiltration
- Stainless steel tamper proof screws and bits
- Wet location
- Lamps are fully adjustable
- Fully gasketed housing
- Available in white and black
- Universal spider knockout pattern stamped into backplate for junction box mounting
- Temperature code: T4A
- For surface or suspended conduit mount use accessory JB032

• Ambient Temperature

- -35°C to +40°C

• Approvals

- CSA Certified to C22.2 #141-15
- CSA Certified to C22.2 #137
- CSA Certified type 2, 3, 3R, 4, 4X, 5, 12 or 12K
- CSA Certified to NSF 2
- IP66
- IK10
- Class I, div 2, groups A, B, C, D
- Class II, div 2, groups F, G
- Class III, div 2

• Compliance

- Meets requirements of ICES-005

OVERVIEW

Light source	LED
Input voltage (VDC)	6, 12, 24



ICES
005



hazardous
location



IK10



SANITATION
NSF/ANSI 2

For complete warranty details, please see our terms and conditions on our website.

TYPICAL SPECIFICATION



TYPICAL SPECIFICATION

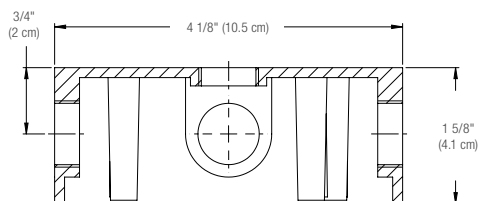
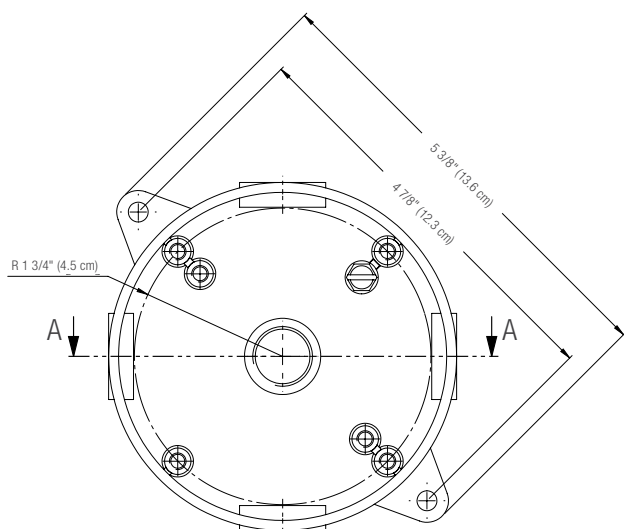
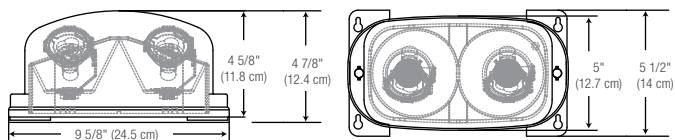
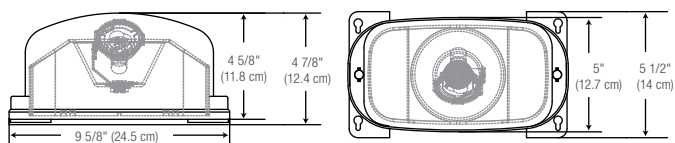
Remote head shall be completely protected from the elements within a fully gasketed polycarbonate housing, be fully adjustable both tilt and swivel and have a universal spider knockout pattern stamped into back plate for junction box mounting. The SWNX shall be 0 V, 0 W, 0 lumens. The MR16 LED's lamps shall be fully integrated in the molded shell to ensure extended life and maximum performance. The remote fixtures shall be HAZARDOUS LOCATION Class I, div 2, groups A, B, C, D Class II, div 2, groups F, G Class III, div 2, certified to CSA 22.2 No.141-15, CSA Certified type 2, 3, 3R, 4, 4X, 5, 12, CSA Certified to NSF 2, IP66, IK10 and be ICES005 compliant. The remote unit shall be Stanpro model: SWNX _____

Data is based upon tests performed in a controlled environment. Actual performance can vary depending on operating conditions.
All products are subject to change or may be discontinued any time without notice.

ORDERING GUIDE - LED

Series	Nbr of heads	Volts (VDC operational)	Watts (W)	Lamp type	Color
SWNX	1 - Single head	06-24V - 6 to 24	4W - 4	LR - LED	BK - Black WH - White
	2 - Double head		5W - 5	LA - LED	
		12-24V - 12 to 24	6W - 6	LA - LED	
			7W - 7		

DIMENSIONS



SECTION A-A

ACCESSORIES (order separately)

Part number	Type
JB032	Junction box round waterproof with 5 x 1/2 inch hubs aluminum

LEXAN GUARD

Part number	Dimensions (in)
PGD104	14 x 7.25 x 7.5

LUMEN TABLE

Watts	Lumens
4W LR	388
5W LA	435
6W LA	507
7W LA	652

SPACING GUIDE

Mounting height	Spacing center to center (ft)			
	4WLR	5WLA	6WLA	7WLA
8 ft	76	81	94	108
10 ft	79	79	93	106
15 ft	66	62	82	96
20 ft	53	49	73	87

Data is based upon tests performed in a controlled environment. Actual performance can vary depending on operating conditions.
All products are subject to change or may be discontinued any time without notice.