

Series Spec Sheet

SWN

"NOAH" WET LOCATION ANTI VANDAL REMOTE

Single or double
 6V, 12V & 24V lamps in LED

The SWN series of wet location anti vandal remotes is designed to perform in extreme environments. The single or double lamp assemblies are completely protected from the elements within a fully gasketed polycarbonate housing. Available in 6 V, 12 V or 24 V models, utilizing LED lamps.

FEATURES AND SPECIFICATIONS

- **Electrical and circuitry**
 - 6 VDC, 12 VDC or 24 VDC
 - LED lamps
- **Circuitry - CEREBRUM**
 - This unit can be connected to Cerebrum's smart battery unit. Please view the Cerebrum brochure for more details on this technology
- **Mechanical**
 - Polycarbonate enclosure is fully gasketed around lens and canopy to prevent water infiltration
 - Stainless steel tamper proof screws and bits
 - Wet location
 - Lamps are fully adjustable
 - Fully gasketed housing
 - Available in white and black
 - Universal spider knockout pattern stamped into backplate for junction box mounting
 - For surface or suspended conduit mount use accessory JB031
- **Ambient Temperature**
 - -35 °C to +40 °C
- **Approvals**
 - CSA Certified to C22.2 #141-15
 - CSA Certified type 2, 3, 3R, 4, 4X, 5, 12 or 12 K
 - CSA Certified to NSF 2
 - IP66
 - IK10
- **Compliance**
 - Meets requirements of ICES-005

OVERVIEW

| | |
|---------------------|-----------|
| Light source | LED |
| Input voltage (VDC) | 6, 12, 24 |



For complete warranty details, please see our terms and conditions on our website.

TYPICAL SPECIFICATION



TYPICAL SPECIFICATION

Remote head shall be completely protected from the elements within a fully gasketed polycarbonate housing, be fully adjustable both tilt and swivel and have a universal spider knockout pattern stamped into back plate for junction box mounting. The SWN shall be 0 V, 0 W, 0 lumens. The MR16 LED's lamps shall be fully integrated in the molded shell to ensure extended life and maximum performance. The remote fixtures shall be certified to CSA 22.2 No.141-15, CSA Certified type 2, 3, 3R, 4, 4X, 5, 12, CSA Certified to NSF 2, IP66, IK10 and be ICES005 compliant. The remote unit shall be Stanpro model: SWN _____

Data is based upon tests performed in a controlled environment. Actual performance can vary depending on operating conditions.
All products are subject to change or may be discontinued any time without notice.

ORDERING GUIDE - LED

| Series | Nbr of heads | Volts (VDC operational) | Watts (W) | Lamp type | Color |
|--------|-----------------|------------------------------------|----------------------------------|-----------|--------------------------|
| SWN | 1 - Single head | 06-24 - 6VDC to 24VDC operational | 4W - 4 watts | LR - LED | BK - Black WH - White |
| | 2 - Double head | | 5W - 5 watts | LA - LED | |
| | | 12-24 - 12VDC to 24VDC operational | 6W - 6 watts | LA - LED | |
| | | | 7W - 7 watts | LA - LED | |
| | 1 - Single head | CER - Cerebrum driver | 5W - 5 watts | LA - LED | |
| | 2 - Double head | CER - Cerebrum driver | 2.5W - 2.5 watts 5W - 5 watts | | |

LEXAN GUARD

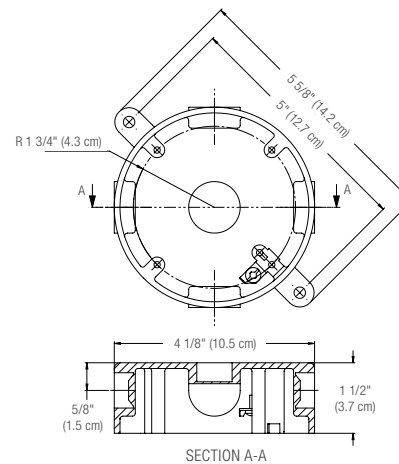
| Wall Mount | Part number | Dimensions (in) |
|------------|-------------|-----------------|
| | PGD104 | 14 x 7.25 x 7.5 |

LUMEN TABLE

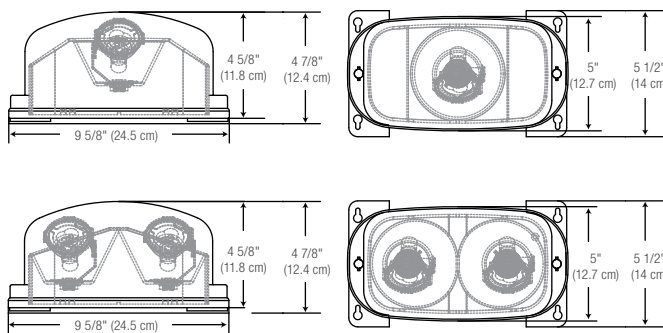
| Watts | Lumens |
|-------|--------|
| 4W LR | 388 |
| 5W LA | 435 |
| 6W LA | 507 |
| 7W LA | 652 |

ACCESSORIES (ORDER SEPARATELY)

| Part number | Type |
|-------------|--|
| JB031 | 4-inch octagonal PVC box with 5 x 1/2 inch threaded hubs |



DIMENSIONS



SPACING GUIDE

| Mounting height | Spacing center to center (ft) | | | |
|-----------------|-------------------------------|------|------|------|
| | 4WLR | 5WLA | 6WLA | 7WLA |
| 8 ft | 76 | 81 | 94 | 108 |
| 10 ft | 79 | 79 | 93 | 106 |
| 15 ft | 66 | 62 | 82 | 96 |
| 20 ft | 53 | 49 | 73 | 87 |

Data is based upon tests performed in a controlled environment. Actual performance can vary depending on operating conditions.
All products are subject to change or may be discontinued any time without notice.