

Series Spec Sheet

CDHF1

HAZARDOUS LOCATION FLOOD LIGHTS

Class I, Division 1, Groups C, D

Class I, Division 2, Groups A, B, C, D

Non recessed Marine luminaires, outside type (salt water)

The CDHF1 LED flood lights are specifically engineered for use in hazardous environments containing flammable vapors or gases. This series is designed for locations prone to vibrations, as well as NEMA 4X environments characterized by exposure to wind, water, snow, or high ambient temperatures

FEATURES AND SPECIFICATIONS

• Physical Characteristics

- Rugged and resilient housing made of a aluminum-alloy material available in a grey housing finish.
- All exposed fasteners are quality stainless steel.

Temperature ratings

Based on the surface temperature of the fixture:

- Class I, Division 1 is rated:
 - T6 (will not exceed 85°C) for 30 W, 60 W, 100 W, 150 W models
 - T5 (will not exceed 100 °C) for 200 W models
- Class I, Division 2 is rated:
 - T5 (will not exceed 100 °C) for 30 W models
 - T4A (will not exceed 120 °C) for 100 W and 150 W models
 - T4 (will not exceed 135 °C) for 60 W and 200 W models

Ambient operating temperature

- -40 °C to +60 °C for 30 W, 60 W, 100 W models
- -40 °C to +55 °C for 150 W and 200 W models

Ambient operating humidity

10 % to 90 % RH

Mounting types

Standard mounting type is pendant mount including a safety cable and this series offers the following accessories:

- Yoke mount (wall/ground or ceiling applications)
- Side surface mount
- Slipfitter with wall/pole adapter
- Chain mount
- Slipfitter (inner Ø 2.60")
- Pole mounting
- Adjustable arm for square/round pole
- Junction box

Lens/Optics

Comes standard with an impact resistant clear tempered glass lens available in a various beam angles options: 23 degrees, 110 degrees and Nema 7Hx6V.

• Performance data

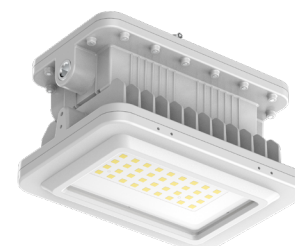
- Available in 2 700 K, 3 000 K, 4 000 K, 5 000 K, 5 700 K, 6 500 K color temperature
- 70+ CRI
- Electrical ratings: 120-277 V 50/60 Hz and 277-480 V 50/60 Hz for 150 W lumen package.
- Estimated life L70 >60 000
- 0-10 V dimming standard
- Built-in DM 6 kV (line-line) and a CM 10 kV (line-earth)
- Power factor of ≥0.9
- THD of ≤20 %

• Suitable for zone ratings:

- Zone 1, Group IIB

• Compliances

- Meets requirements of ICES-005 issue 5 class A for use in commercial applications
- IP66
- IK09
- NEMA 4X
- UL 844
- UL 1598
- UL 1598A
- UL 8750
- CSA C22.2 No.137.0
- CSA C22.2 No.250.0
- CSA C22.2 No.250.13
- 3G vibration resistant in compliance with ANSI/IEEE C136.31 standard for luminaire vibration



30 W - 60 W



100 W - 200 W

OVERVIEW

Light source	LED
Watts (W)	30, 60, 100, 150, 200
Lumen output (lm)	4 050-31 400
Efficacy (lm/W)	128-165
Color temperature (K)	2 700, 3 000, 4 000, 5 000, 5 700, 6 500
CRI	>70



ORDERING GUIDE

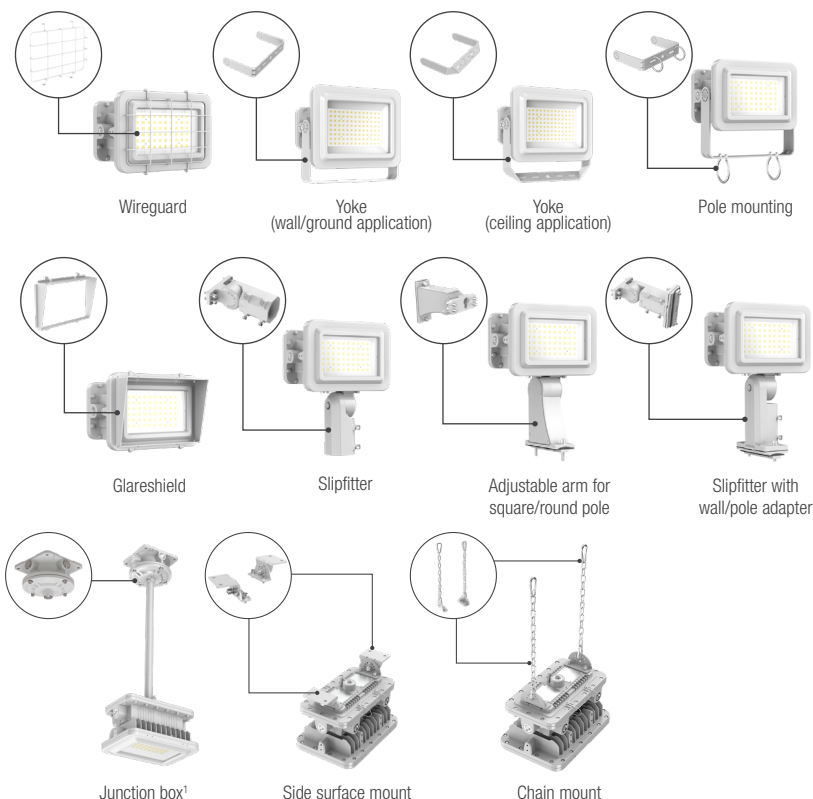
Series	Lumen Package (W)	Beam angle	Voltage (V)	Color temperature (K)	Casting color
CDHF1	S1 - 30 S2 - 60 S3 - 100 S5 - 200 S4 - 150	N2 - 23° W3 - 110° VW1 - 7Hx6V	W - 120-277 W - 120-277 K - 277-480	27 - 2 700 30 - 3 000 40 - 4 000 50 - 5 000 57 - 5 700 65 - 6 500	GY - Grey

LUMEN SPECIFICATION TABLE

Watts	Beam angle	Volts	Fixture current	4 000 K		CRI	Life L70	Power factor	THD
(W)		(V)	(A)	Lumen output (lm)	Efficacy (lm/W)		(hrs)		(%)
30	23°	120-277	0.35	4 237	145	>70	>60 000	≥0.9	≤20
60		120-277	0.65	8 703	142				
100		120-277	1.1	14 021	134				
150		120-277	1.65	20 102	128				
150		277-480	0.6	19 797	130				
200		120-277	2.2	24 601	123				
30	110°	120-277	0.35	4 434	152				
60		120-277	0.65	9 187	150				
100		120-277	1.1	15 437	148				
150		120-277	1.65	24 368	157				
150		277-480	0.6	24 062	159				
200		120-277	2.2	30 276	153				
30	7Hx6V	120-277	0.35	4 401	150				
60		120-277	0.65	9 147	149				
100		120-277	1.1	16 232	156				
150		120-277	1.65	24 213	156				
150		277-480	0.6	24 031	159				
200		120-277	2.2	29 921	152				

ACCESSORIES (order separately)

Order code	Description
70364	Yoke mount for 30 W and 60 W models (wall/ground application)
70365	Yoke mount for 100 W, 150 W and 200 W models (wall/ground application)
70366	Yoke mount for 30 W and 60 W models (ceiling application)
70367	Yoke mount for 100 W, 150 W and 200 W models (ceiling application)
70368	Glareshield for 30 W and 60 W models
70369	Glareshield for 100 W, 150 W and 200 W models
70370	Pole mounting for 30 W and 60 W models
70371	Pole mounting for 100 W, 150 W and 200 W models
70372	Wireguard for 30 W and 60 W models
70373	Wireguard for 100 W, 150 W and 200 W models
70359	Slipfitter
70360	Adjustable arm for square/round pole
70361	Slipfitter with wall/pole adapter
70397	Side surface mount
70398	Chain mount
70302 ¹	Junction box

¹ Pipe is not supplied.


Data is based upon tests performed in a controlled environment. Actual performance can vary depending on operating conditions. All products are subject to change or may be discontinued any time without notice.

COMPATIBLE DIMMERS¹

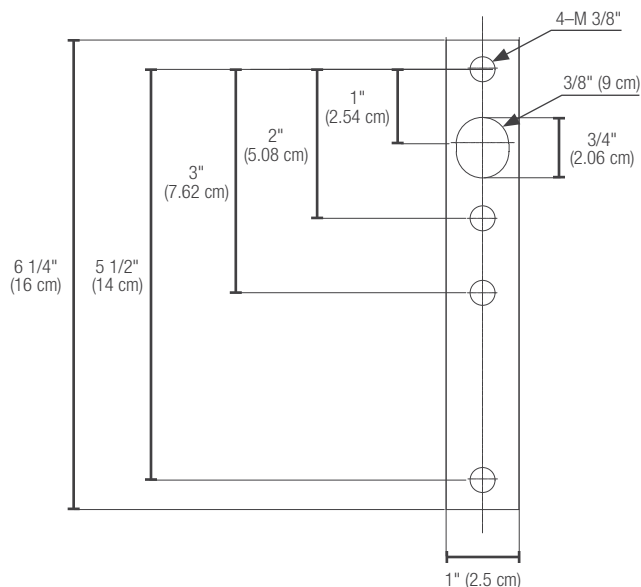
Brand	Model
Leviton	DS710
Lutron	NTSTV-DV, NFTV, DVSTV

Dimming range: 0%-100%

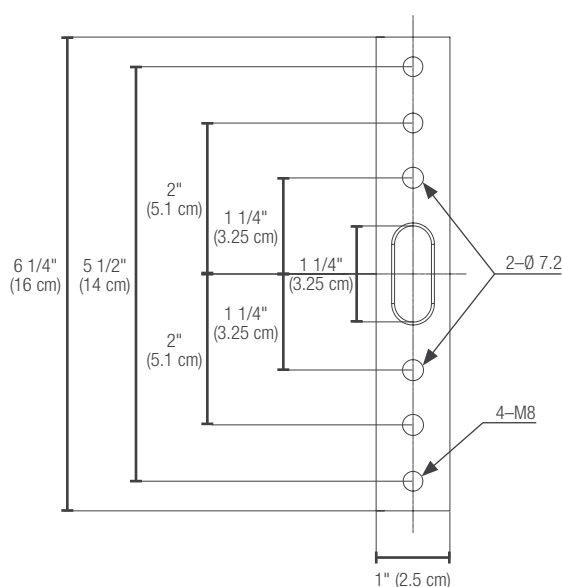
¹ This table shows dimmers that have been tested and have demonstrated proper operation under normal conditions. Each installation being unique, various factors such as load, common neutrals or other electrical products on the circuit can, in certain instances, cause variance in system performance. Read and comply to the dimmer installation instructions. Consult dimming system manufacturer for additional support in operation. Some dimmers may require more than one product for stable operation. Stanpro recommends to use dimmers designed to work with LED products. Older dimmers designed for incandescent products may cause erratic operation.

DRILLING PATTERNS

Adjustable arm for square/round pole
70360

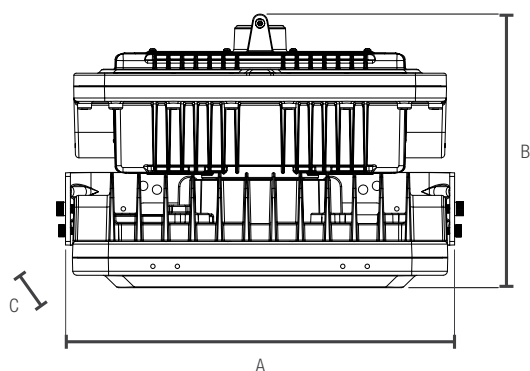


Slipfitter with wall/pole adapter
70361



DIMENSIONS AND WEIGHTS

PENDANT MOUNT



	30 W	60 W	100 W	150 W	200 W
A in. (cm)	10 3/4" (27.30 cm)		14 1/2" (36.83 cm)		
B in. (cm)	7 7/8" (19.89 cm)		8 3/8" (21.21 cm)		
C in. (cm)	7 5/8" (19.48 cm)		11 1/4" (28.70 cm)		
Net weight (lbs)	18.39		32.84		

Data is based upon tests performed in a controlled environment. Actual performance can vary depending on operating conditions. All products are subject to change or may be discontinued any time without notice.