

VTL4 GEN. 3

3 CCT Select, 3 Power Select,
NEMA 4X, NSF Vapor Tight
Series

Slim 4' luminaire providing superior light distribution with the ability to withstand reduced temperatures and moderate impact. Ideal for environments where moisture and/or dust may be present. The watertight seal locks out dust and makes this fixture the perfect solution for applications that may require: washability/hose down



■ Color and Power Selectable

CCT Selectable feature available on all configurations offering the versatility to switch between 3 color temperatures: 3 500/4 000/5 000 K. Convenient for a variety of projects and applications. An ideal solution for reducing stocking inventory.

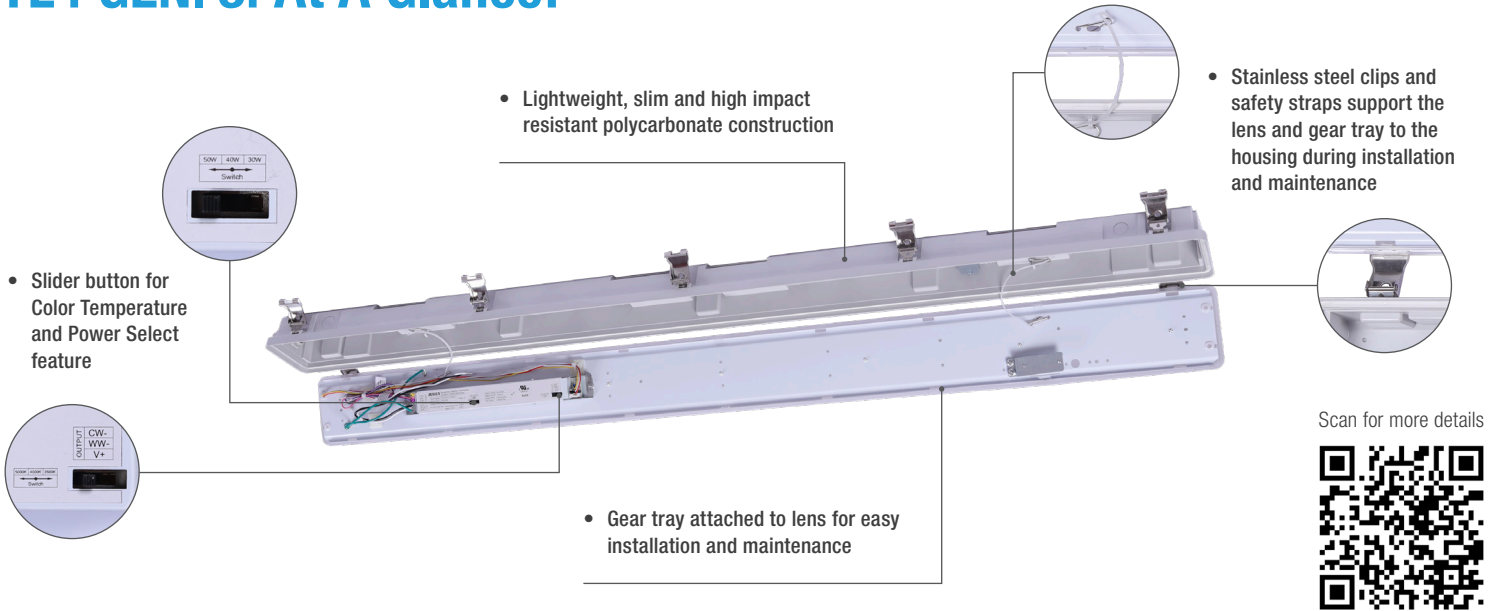
■ Easy Maintenance

Smooth surfaces are easy to clean making this fixture perfect for NSF compliant environments. Internal components are easily accessible with the stainless steel clips. Once closed, the gasketed seal keeps the LEDs and electrical components secure from environmental debris and moisture.

■ Easy Installation

Designed for easy access and installation, the gear tray is attached to the lens exposing the internal components when the fixture is in open position.

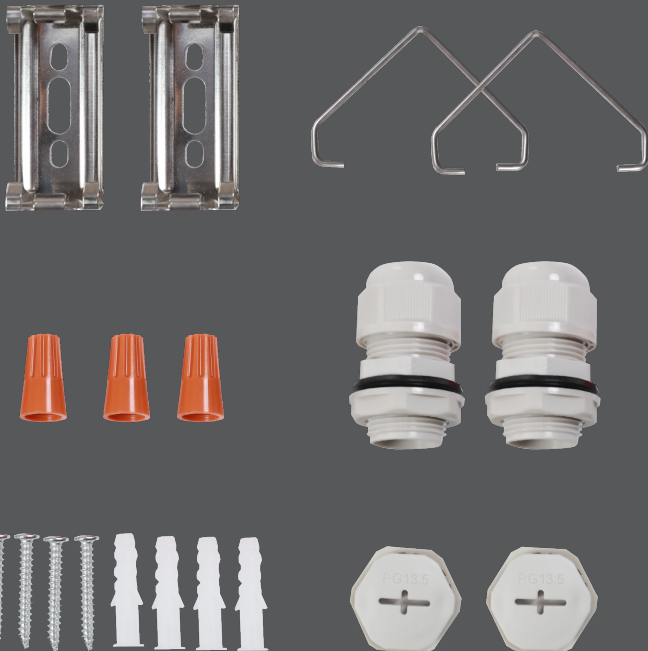
VTL4 GEN. 3: At A Glance!



Included with Every Luminaire!

HARDWARE KIT

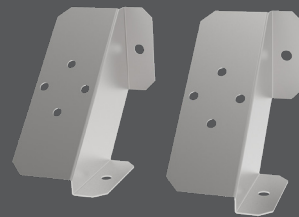
Includes watertight end caps (2pcs), watertight glands (2pcs), surface mount brackets (2pcs), V-hooks (2pcs) and mounting hardware



ACCESSORIES (SOLD SEPARATELY)

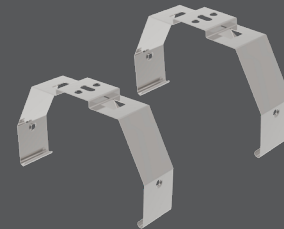
90° ANGLE BRACKETS

Set of 2 pcs in stainless steel



TAMPER PROOF BRACKETS

Set of 2 pcs in stainless steel



JUNCTION BOX BRACKET

1 pc

