



AimLite

# A12K-L GEN. 2

## AREA LIGHT



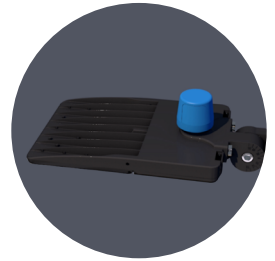
## FEATURES

- 3 000, 4 000, 5 000 K single temperatures.
- Offered in Type III, IV and V with rotatable lenses to allow for light distribution in various directions
- Outfitted with a polycarbonate Lens
- 120-277 V and 347-480 V
- Operating temperature: -40 °C to 40 °C (-40 °F to 104 °F)
- Meets BC Hydro requirements
- Models with CCT of 3000K or lower are DarkSky approved

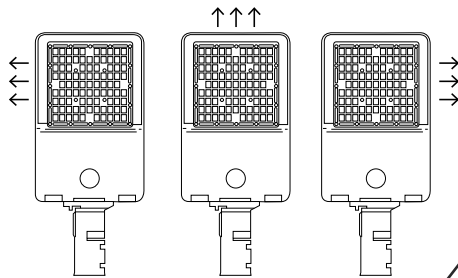


# AREA LIGHT

Comes standard with a 3 pin receptacle and a shorting cap.  
Optional 7 pin receptacle available



Polycarbonate Lens



Rotatable Lenses for a customizable light distribution

Optional occupancy sensor

Black finish and paint options available

## MOUNTING OPTIONS

PA6 (square)  
PA6R (round)  
POLE ARM



A  
SPLIFITTER



AR  
ADJUSTABLE ARM FOR  
SQUARE POLE AND WALL MOUNT



TR  
YOKE

