

AimLite

# S20TR TRI-LEVEL MOTION SENSOR LED STRIP

3 CCT AND 3 POWER SELECTABLE



## FEATURES

- Integrated microwave or PIR motion sensor with tri-level, bi-level, On/Off and daylight harvesting capabilities
- Available in 2ft, 3ft, 4ft and 8ft lengths
- 120-347 V
- Lumen output ranging from 2 520 - 12 780 lumens
- 3 500/4 000/5 000 K selectable colour temperature
- V-Hooks and junction box cover included in the box
- Frosted round lens offers an evenly diffused light without hotspots
- Surface, suspended or row mounting



AimLite

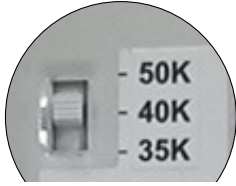
S20TR

T 514 227-1288

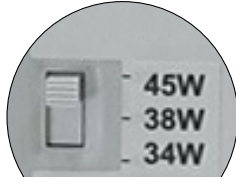
TF 1866 348-2374

aimlite.com

## S20TR AT A GLANCE

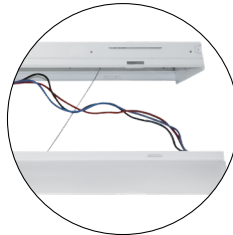


**CCT SWITCH**

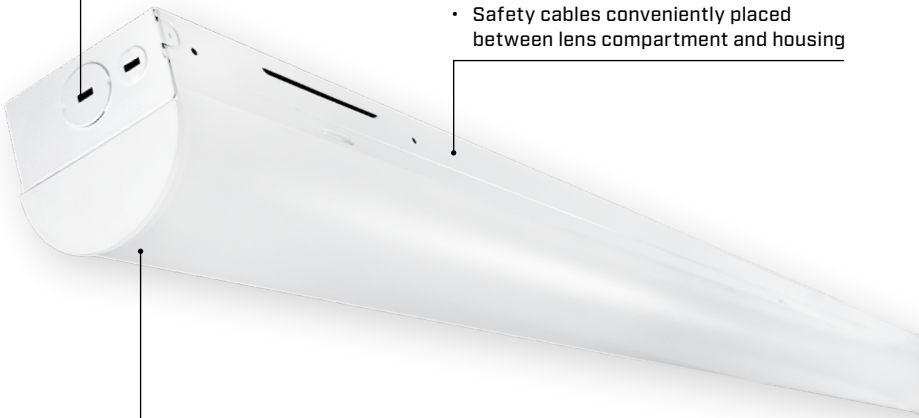


**POWER SWITCH**

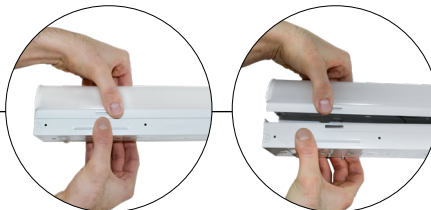
- CCT and Power Selectable switches placed discretely inside the housing



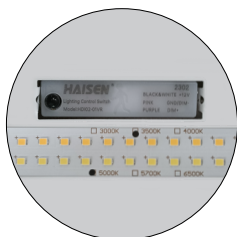
- Safety cables conveniently placed between lens compartment and housing



- Two-part housing design with tool-less entry!



## Sensor Technologies



### Microwave

*Installed Behind the Lens*



### PIR

*Installed On the End of the Luminaire*

## Included with Every Luminaire!



**Junction Box  
Cover Plate**



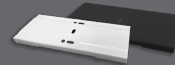
**V-Hooks**



## Accessories (Sold Separately)



**Transparent End  
Caps**



**Continuous Row  
Mounting Connectors**



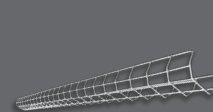
**Suspension Chain  
Kit**



**10' Complete Aircraft Cable  
Kits with 5-Wire Power  
Feed and 2 Canopies**



**10' Single Side Aircraft  
Cables with Canopy  
(Non-Power Feed)**



**Wire Guard Kits**



**Reflector Wings Kit**



**Remote Control for  
Microwave Motion Sensor**



**Remote Control for  
PIR Motion Sensor**

*The remote control is required to modify sensor programming.  
A single remote control can be used to program multiple sensors.*

## Looking for Regular LED Strips?

Check out the S20RS Series!

